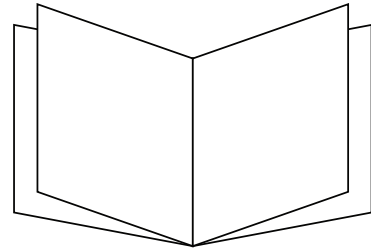


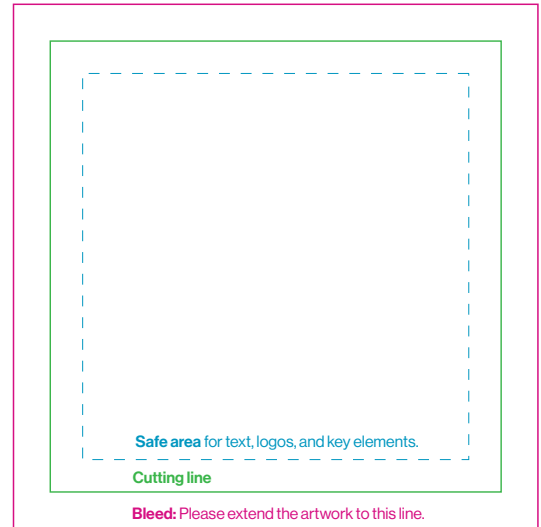
# V7 insert/booklet

Spread page template for insert/booklet  
7" vinyl size



## PRINT REQUIREMENTS

- Print file in PDF.
- Use CMYK colour mode.
- Resolution: 300 dpi, scale 1:1.
- Delete all template lines from the print file; leave crop marks only.
- Ensure that 3mm bleeds are added around the artwork.
- Maximum ink levels: 320%.
- For reverse board/uncoated paper, maximum ink levels: 260%.
- For hot stamping, embossing, and spot UV, use spot color 100% in vector format only.



**Crop marks:**  
They help us align artwork properly to the cutter.  
This is especially important if the background is white.

## TIPS FROM OUR PRINTHOUSE

- ✔ Gray separations: If you want black and white artwork, create grayscale using only the black channel (K).
- ✔ For grayscale enriched with CMYK, remember the proportions of 2x K compared to other inks, for example, C20M20Y20K40. This provides better control over colour hue.
- ✔ The minimum ink amount is 6% - values below this threshold won't be visible in print.
- ✔ Remember the contrast in ink between dark elements; what you see on the screen may not be as visible in print.
- ✔ Images on the screen appear brighter than in print (the screen shines, paper doesn't).
- ✔ Be cautious with borders around the edge; the knife may cause uneven frames.
- ✔ Letters should be larger than 6p; below that size, we can't guarantee sharp printed letters, especially for thin or light fonts.
- ✔ Letters look better in vector format rather than bitmap.
- ✔ Black letters will be sharper when made solely of 100%K and set to overprint.
- ✔ Barcodes work best when made solely of 100%K.
- ✔ Keep in mind that finishing processes may slightly alter colours: matte foil reduces contrast, while glossy foil intensifies the depth of dark colours.
- ✔ **We always recommend preparing booklet page by page, but if you decide to prepare it in spreads, please remember about corect page order as shown below**

