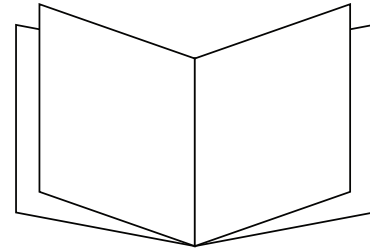


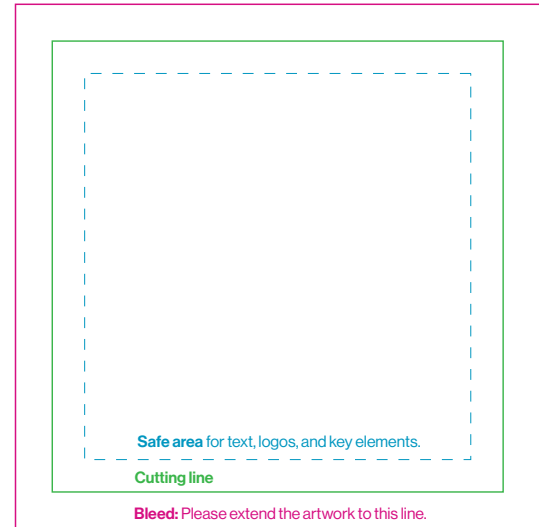
V7 insert/booklet

Single page template for insert/booklet
7" vinyl size



PRINT REQUIREMENTS

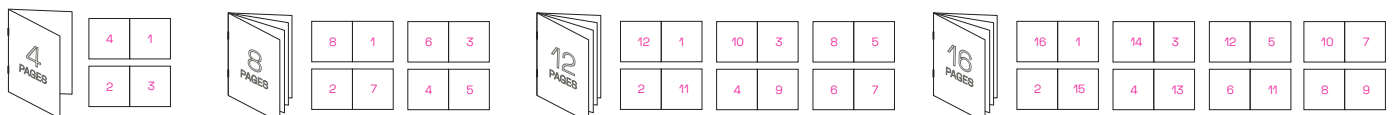
- Print file in PDF.
- Use CMYK colour mode.
- Resolution: 300 dpi, scale 1:1.
- Delete all template lines from the print file; leave crop marks only.
- Ensure that 3mm bleeds are added around the artwork.
- Maximum ink levels: 320%.
- For reverse board/uncoated paper, maximum ink levels: 260%.
- For hot stamping, embossing, and spot UV, use spot color 100% in vector format only.



← Crop marks:
They help us align artwork properly to the cutter.
This is especially important if the background is white.

TIPS FROM OUR PRINTHOUSE

- ✓ Gray separations: If you want black and white artwork, create grayscale using only the black channel (K).
- ✓ For grayscale enriched with CMYK, remember the proportions of 2x K compared to other inks, for example, C20M20Y20K40. This provides better control over colour hue.
- ✓ The minimum ink amount is 6% - values below this threshold won't be visible in print.
- ✓ Remember the contrast in ink between dark elements; what you see on the screen may not be as visible in print.
- ✓ Images on the screen appear brighter than in print (the screen shines, paper doesn't).
- ✓ Be cautious with borders around the edge; the knife may cause uneven frames.
- ✓ Letters should be larger than 6p; below that size, we can't guarantee sharp printed letters, especially for thin or light fonts.
- ✓ Letters look better in vector format rather than bitmap.
- ✓ Black letters will be sharper when made solely of 100%K and set to overprint.
- ✓ Barcodes work best when made solely of 100%K.
- ✓ Keep in mind that finishing processes may slightly alter colours: matte foil reduces contrast, while glossy foil intensifies the depth of dark colours.
- ✓ **We always recommend preparing booklet page by page, but if you decide to prepare it in spreads, please remember about correct page order as shown below**



180 mm

180 mm

