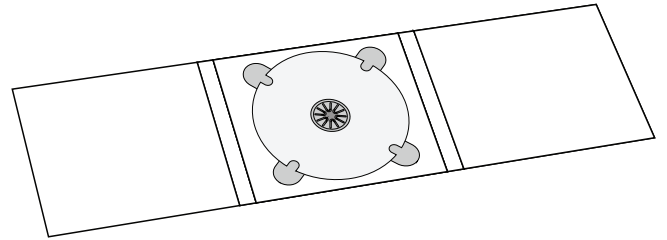










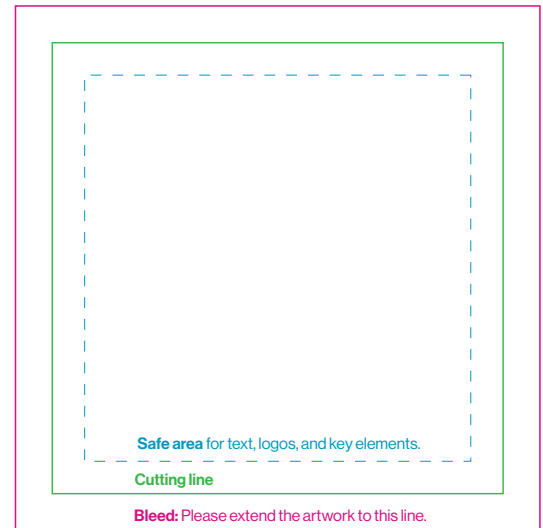
D3

6-page digipack for 1 cd, tray in the middle



PRINT REQUIREMENTS

-  Print file in PDF.
-  Use CMYK colour mode.
-  Resolution: 300 dpi, scale 1:1.
-  Delete all template lines from the print file; leave crop marks only.
-  Ensure that 3mm bleeds are added around the artwork.
-  Maximum ink levels: 320%.
-  For reverse board/uncoated paper, maximum ink levels: 260%.
-  For hot stamping, embossing, and spot UV, use spot color 100% in vector format only.



Crop marks:

They help us align artwork properly to the cutter. This is especially important if the background is white.

TIPS FROM OUR PRINTHOUSE

- ✓ Check the panel orientation! Front, Back, Inside - we are folding covers, so some pages may be upside down on our template.
- ✓ Gray separations: If you want black and white artwork, create grayscale using only the black channel (K).
- ✓ For grayscale enriched with CMYK, remember the proportions of 2x K compared to other inks, for example, C20M20Y20K. This provides better control over colour hue.
- ✓ The minimum ink amount is 6% - values below this threshold won't be visible in print.
- ✓ Remember the contrast in ink between dark elements; what you see on the screen may not be as visible in print.
- ✓ Images on the screen appear brighter than in print (the screen shines, paper doesn't).
- ✓ Be cautious with borders around the edge; the knife may cause uneven frames.
- ✓ Letters should be larger than 6p; below that size, we can't guarantee sharp printed letters, especially for thin or light fonts.
- ✓ Letters look better in vector format rather than bitmap.
- ✓ Black letters will be sharper when made solely of 100%K and set to overprint.
- ✓ Barcodes work best when made solely of 100%K.
- ✓ Keep in mind that finishing processes may slightly alter colours: matte foil reduces contrast, while glossy foil intensifies the depth of dark colours.

137 mm

11 mm

135,5 mm

12 mm

138 mm

INSIDE

INSIDE
(TRAY)

INSIDE

INSIDE

SPINE

BACK

SPINE

FRONT

139 mm

6 mm

140 mm

8,5 mm

140 mm

120 mm

120 mm